

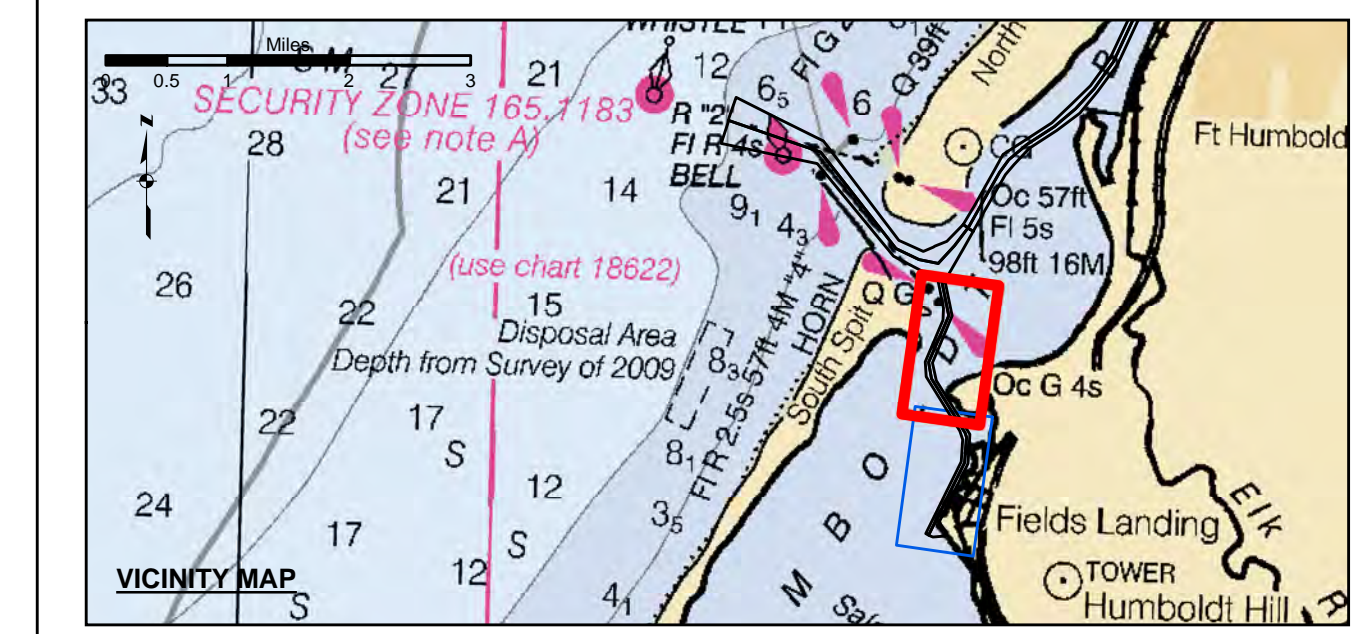
**US Army Corps of Engineers**  
 San Francisco District  
 1455 Market Street  
 San Francisco, CA 94103

**DISCLAIMER**  
 The United States Government furnishes this information for your information only. It is not intended to be used for navigation. The user is responsible for the results of any use of this information. The user is responsible for the results of any use of this information. The user is responsible for the results of any use of this information. The user is responsible for the results of any use of this information.

Chart Date:	Apr 08, 2020
Designed by:	PDT
Drawn by:	PDT
Checked by:	PDT
Approved:	PDT

CALIFORNIA  
 HUMBOLDT COUNTY  
**HUMBOLDT BAY  
 FIELDSLANDING CHANNEL**  
 CONDITION SURVEY  
 31 MARCH 2020

**Sheet  
 Number  
 1 of 2**



- |                            |                    |                 |
|----------------------------|--------------------|-----------------|
| Federal Navigation Channel | Beacon, General    | <b>Contours</b> |
| Shoaling Area              | Obstruction Point  |                 |
| Placement Area             | Navigation Buoy    |                 |
| Anchorage Area             | Navigation Buoy    |                 |
| Wreck Area                 | Shoalest Sounding* |                 |
| Submerged Wreck            |                    | -26             |
| Angle Point                |                    | -25             |
|                            |                    | -24             |
|                            |                    | -23             |
|                            |                    | -22             |

**NOTES:**  
 DRAWINGS NOT TO BE USED AS NAVIGATION. ONLY CHANNEL CONDITION AT DATE OF SURVEY. THE LOCATION OF ALL NAVIGATION AIDS ARE BASED ON INFORMATION PROVIDED BY THE U.S. COAST GUARD. BUOY LOCATION REPRESENT THE POSITION OF THE SINKER ONLY.

SURVEYED BY THE CORPS OF ENGINEERS.  
 SOUNDINGS WERE TAKEN BY FATHOMETER AND ARE SHOWN TO THE NEAREST TENTHS OF A FOOT.  
 SOUNDINGS ARE BASED ON THE DATUM OF MEAN LOWER LOW WATER AT THE LOCALITY.

PLANE GRID AND COORDINATES ARE BASED ON THE STATE OF CALIFORNIA COORDINATE SYSTEM, LAMBERT CONFORMAL PROJECTION, ZONE 1 NAD 83, CALIFORNIA, AS DESCRIBED IN SPECIAL PUBLICATION NO. 235, PUBLISHED BY THE NATIONAL OCEAN SURVEY.

PROJECT DEPTHS ARE AS FOLLOWS:  
 BAR & ENTRANCE CHANNEL = 48 FEET  
 NORTH BAY, SAMO'A TO MILE 5.0 & = 38 FEET  
 EUREKA CHANNEL, FIELDS LANDING CHANNEL & MILE 5.0 TO 'N' STREET = 26 FEET

1:00 INDICATES THE NUMBER AND BEGINNING OF A LINE OF SOUNDINGS.  
 SOUNDINGS ARE BASED ON TIDE GAUGES REFERENCED TO U.S.C. & G.S.  
 SOUNDINGS REFERENCED TO SURVEY CONTROLS BELOW

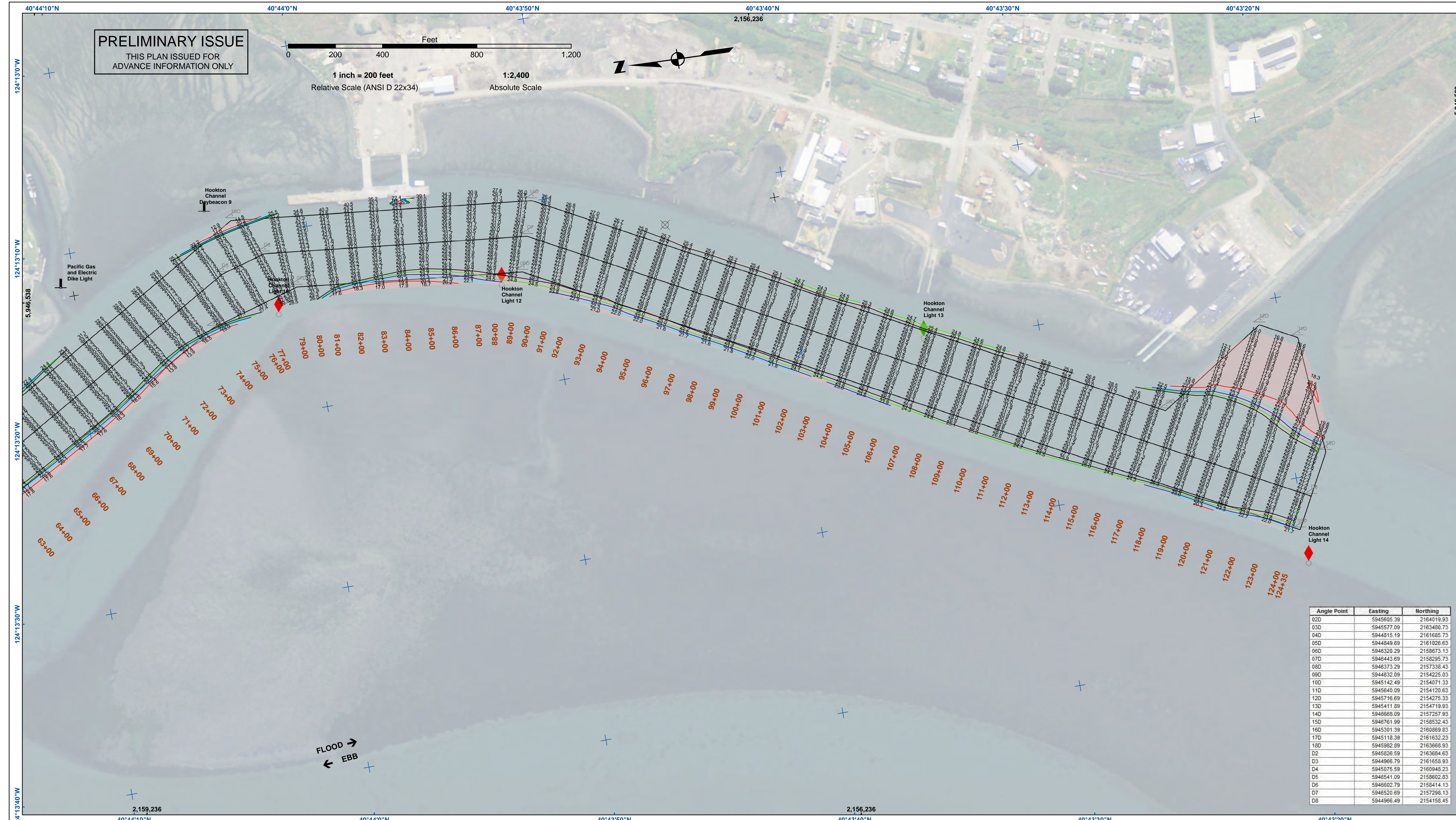
NOAA TIDE STATION:  
 9418767, NORTH SPIT  
 PUBLISHED Oct 2011

CONTROL BENCHMARK:  
 V 1403 1988 (LV0637)  
 OPUS April 2020

TIDES:  
 MLLW CORRECTIONS DERIVED FROM VDATUM v4.0.1 USING GEOID18  
 ORTHOMETRIC HEIGHTS

POSITION:  
 RTK POSITIONING

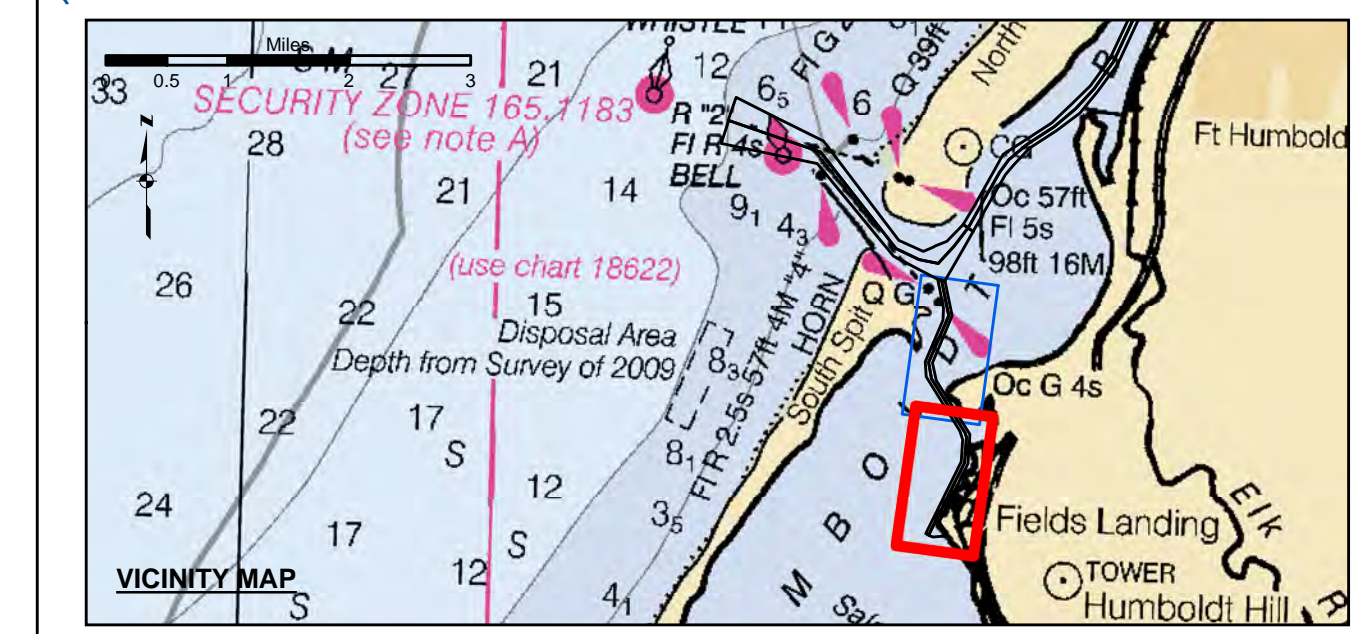




**PRELIMINARY ISSUE**  
THIS PLAN ISSUED FOR  
ADVANCE INFORMATION ONLY

0 200 400 800 1,200  
Feet  
1 inch = 200 feet  
Relative Scale (ANSI D 22x34) 1:2,400  
Absolute Scale

Angle Point	Easting	Northing
02D	5945685.39	2164019.93
03D	5945577.09	2163480.73
04D	5944815.19	2161685.73
05D	5944649.69	2161026.63
06D	5946320.29	2158873.13
07D	5946443.69	2158296.73
08D	5946373.29	2157338.43
09D	5944832.09	2154225.03
10D	5945142.49	2154071.33
11D	5945640.09	2154120.63
12D	5945716.69	2154275.33
13D	5945411.89	2154719.93
14D	5946668.09	2157257.93
15D	5946761.99	2158532.43
16D	5945301.39	2160869.83
17D	5945118.39	2161632.23
18D	5945982.89	2163668.93
D2	5945826.59	2163684.63
D3	5944966.79	2161658.93
D4	5945075.59	2160948.23
D5	5945451.09	2159802.63
D6	5946602.79	2158414.13
D7	5946520.69	2157298.13
D8	5944966.49	2154158.45



- Federal Navigation Channel
  - Shoaling Area
  - Placement Area
  - Anchorage Area
  - Wreck Area
  - Submerged Wreck
  - Angle Point
  - Beacon, General
  - Obstruction Point
  - Navigation Buoy
  - Navigation Buoy
  - Shoalest Sounding\*
- Contours**
- 26
  - 25
  - 24
  - 23
  - 22

**NOTES:**  
DRAWINGS NOT TO BE USED AS NAVIGATION. ONLY CHANNEL CONDITION AT DATE OF SURVEY. THE LOCATION OF ALL NAVIGATION AIDS ARE BASED ON INFORMATION PROVIDED BY THE U.S. COAST GUARD. BUOY LOCATION REPRESENT THE POSITION OF THE SINKER ONLY.

SURVEYED BY THE CORPS OF ENGINEERS.

SOUNDINGS WERE TAKEN BY FATHOMETER AND ARE SHOWN TO THE NEAREST TENTHS OF A FOOT.

SOUNDINGS ARE BASED ON THE DATUM OF MEAN LOWER LOW WATER AT THE LOCALITY.

PLANE GRID AND COORDINATES ARE BASED ON THE STATE OF CALIFORNIA COORDINATE SYSTEM, LAMBERT CONFORMAL PROJECTION, ZONE 1 NAD 83, CALIFORNIA, AS DESCRIBED IN SPECIAL PUBLICATION NO. 235, PUBLISHED BY THE NATIONAL OCEAN SURVEY.

PROJECT DEPTHS ARE AS FOLLOWS:  
BAR & ENTRANCE CHANNEL = 48 FEET  
NORTH BAY, SAMO'A TO MILE 5.0 & = 38 FEET  
EUREKA CHANNEL, FIELDS LANDING CHANNEL & MILE 5.0 TO 'N' STREET = 26 FEET

1:00 INDICATES THE NUMBER AND BEGINNING OF A LINE OF SOUNDINGS.

SOUNDINGS ARE BASED ON TIDE GAUGES REFERENCED TO U.S.C. & G.S.

SOUNDINGS REFERENCED TO SURVEY CONTROLS BELOW

NOAA TIDE STATION:  
9418767, NORTH SPIT  
PUBLISHED Oct 2011

CONTROL BENCHMARK:  
V 1403 1988 (LV0637)  
OPUS April 2020

TIDES:  
MLLW CORRECTIONS DERIVED FROM VDATUM v4.0.1 USING GEOID18  
ORTHOMETRIC HEIGHTS

POSITION:  
RTK POSITIONING

**US Army Corps of Engineers**  
San Francisco District  
1455 Market Street  
San Francisco, CA 94103

**DISCLAIMER**  
The United States Government furnishes this information for your use and does not express any opinion or make any warranty, expressed or implied, concerning the accuracy, completeness, reliability, usability, or timeliness of the information. The user is responsible for the results of any application of the information. The user is responsible for the results of any application of the information for other than its intended purpose. These data belong to the Government. Therefore the user may not transfer these data to others without also transferring this Disclaimer.

Chart Date:	Apr 08, 2020
Designed by:	PDT
Plotted by:	PDT
Checked by:	PDT
Drawn by:	PDT

CALIFORNIA  
HUMBOLDT COUNTY  
HUMBOLDT BAY  
FIELDS LANDING CHANNEL  
CONDITION SURVEY  
31 MARCH 2020

**Sheet Number**  
2 of 2